

Spring semester 2016

Admission Guide

For Special Admission :
Foreigners, Koreans Living
Overseas



Contents

Eligibility and Application Schedule	I .Eligibility	3
	II .Application Schedule	4 - 5
Schedule & How to apply	I .Application Procedure	
	1. Submission Application Form and Required Documents	6
	2. List of Required Documents	8 - 9
	3. Official English Score	10
	4. Procedures of the First Selection and the Second Selection	11
	II .Important Notes	12 - 13
List of Campus and Major		14 - 19
Scholarship and Benefits		20 - 21

Click  Press the button to go to the corresponding.

Inquiry

Related with admission application	Related with admission online system
· Student Affairs Team · Hotline : +82-42-865-2334, 2335 · E-mail : F_adm@ust.ac.kr	· Smart University Team · Hotline : +82-42-865-2383 · E-mail : pegasusiz@ust.ac.kr

Eligibility and Application Schedule

Application Procedure and Instructions

I . Eligibility

UST way of education is based on a self-driven learnig system which allows students to actively engage in defining issues from field studies and solving them, not on a superficial theoretical knowledge transfer.

We strongly encourage to apply UST in accordance with relevant application procedure to all enthusiastic&ingenious scientists who want to unfold their dreams within the educational philosophy of UST.

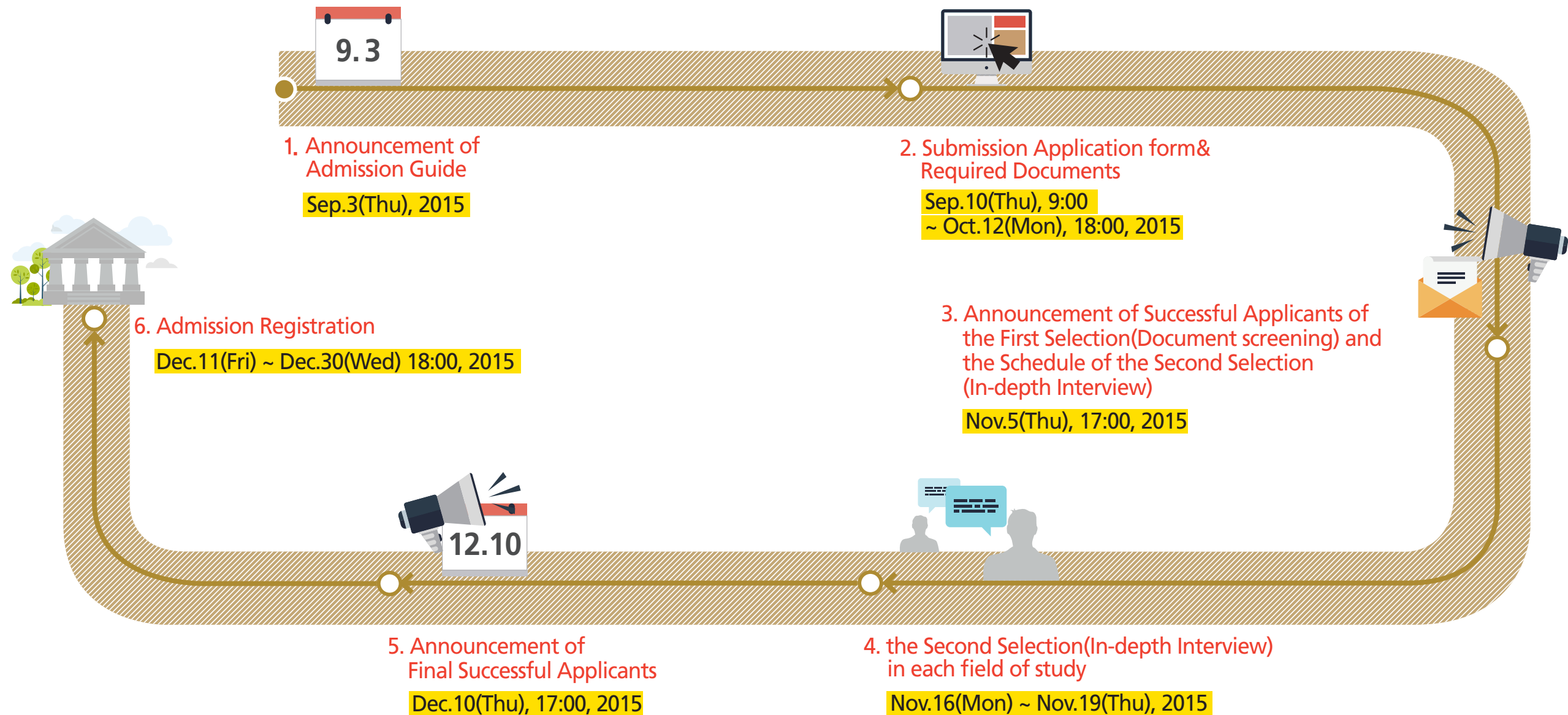
1. Eligibility of Special Admission

Foreigners Must not have held Korean Citizenship, and whose parents are not citizens of Korea	Koreans Living Overseas Must have received his/her entire elementary · junnior high · high school and undergraduate education outside of Korea
---	--

2. Specific Qualification for degree program

Degree Program	Qualification
Doctoral Program	Those who have a master's degree or are expected to get one by Feb. 2016
	Those who are recognized as having qualifications equivalent to a master's degree or approved by law
Integrative Program, Master's Program	Those who have a bachelor's degree or are expected to get one by Feb. 2016
	Those who are recognized as having qualifications equivalent to a bachelor's degree or approved by law
· What is an integrative program? – An integrative program is defined as a graduate program in which students can obtain a doctoral degree – Those who are admitted through this program should pass a qualification examination for their doctoral program – Only a master's degree is conferred on those who have met the requirements of the master's degree; if they quit during the program	

II . Application Schedule



※ Detailed procedures may be subject to change and will be announced on the UST homepage (www.ust.ac.kr)

II. Application Procedure

Eligibility and Application Schedule

Application Procedure and Instructions

List of Campus and Major

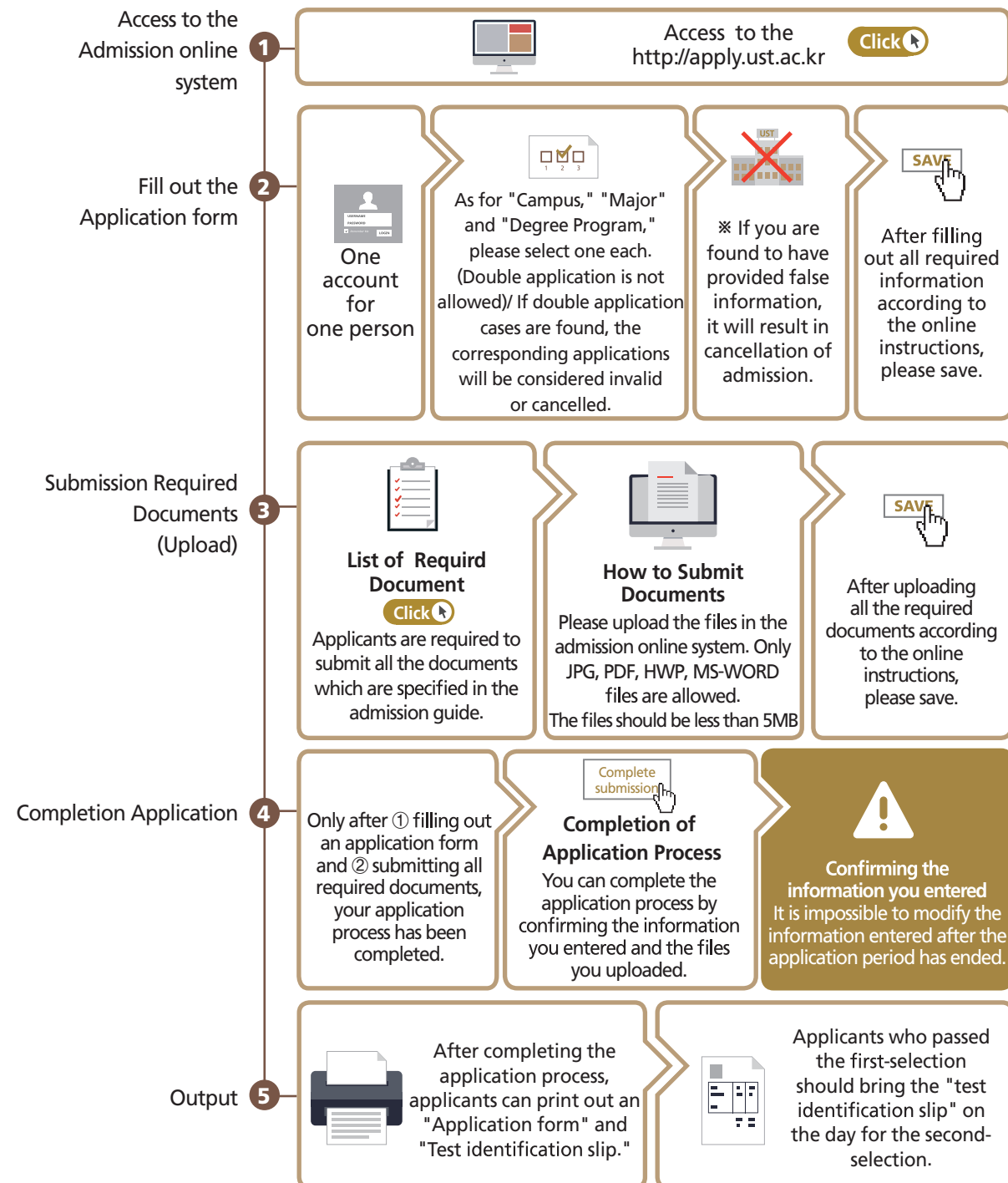
Scholarship and Benefits

Click Press the button to go to the corresponding.

1. Submission Application Form and Required Documents



Sep. 10.(Thu), 9:00 ~ Oct. 12.(Mon), 18:00, 2015



※ Explanation of submission a letter of recommendation in detail

1. Input the recommender's information

Who do Admission applicants

Where Admission online system (<http://apply.ust.ac.kr>)

2. Announcement to write a letter of recommendation for recommenders

Qualifications of recommender : Professor at Universities or Head of department at work places
 - **Professor** must belong to the university where the applicant graduated(or expect to graduate),
 - **Head of the department** must belong to the office where applicant is working currently(or had worked previously)

Way

Recommender can send a letter of recommendation via e-mail. (Please check the URL for letter of recommendation and instructions on how to write a letter of recommendation).
 ※Please note that sending a letter of recommendation through the admission system is allowed only once.

3. Writing the letter of recommendation

Period

The period of submission a letter of recommendation **Sep. 10.(Thu) ~ Oct. 12.(Mon)** (should be arrived within this period)

How to write

Recommender writes the letter of recommendation according to the e-mail from UST (Confirmation e-mail will be sent to the recommender after completing the letter of recommendation)

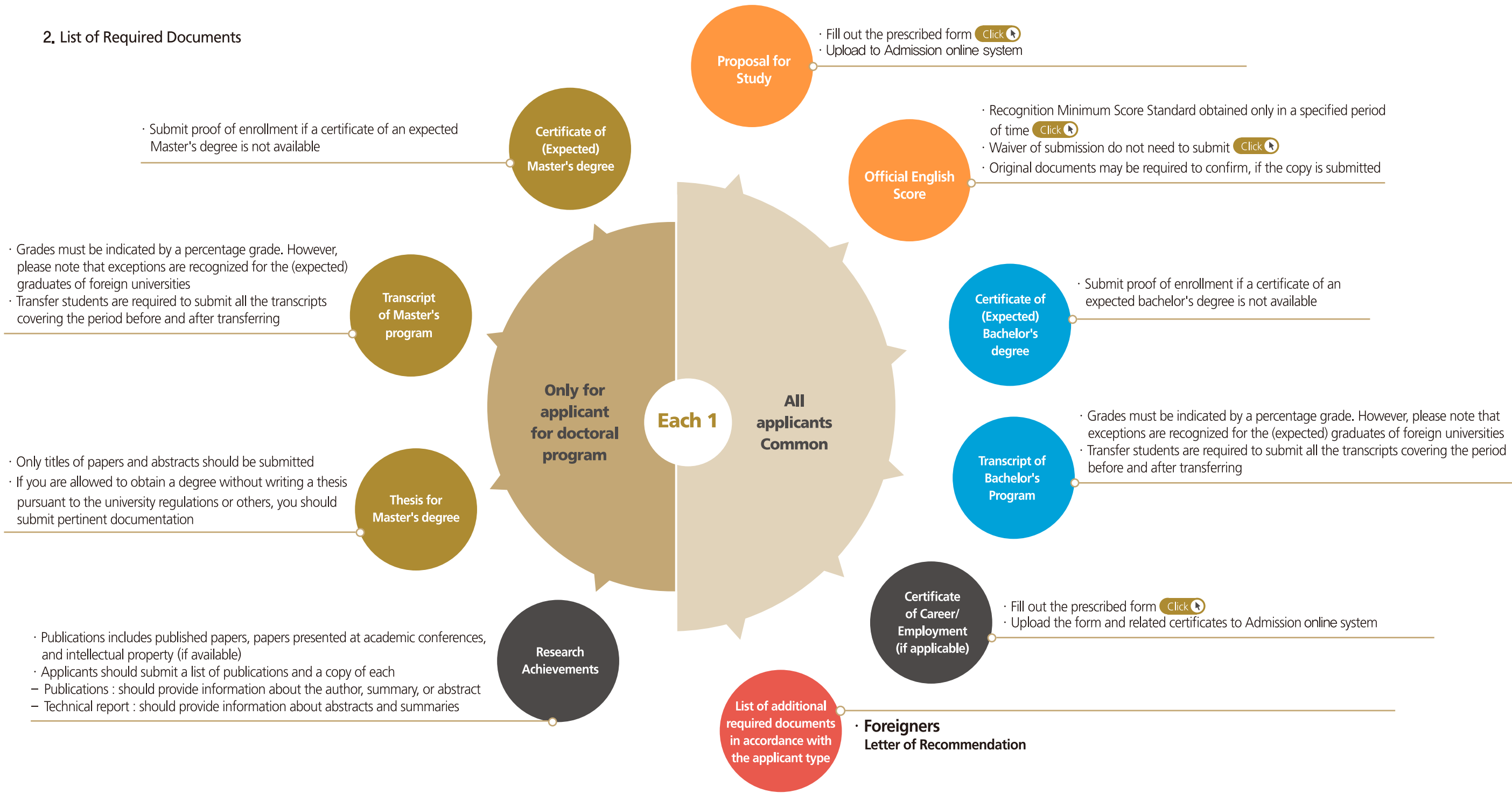
4. Applicants can check whether the letter of recommendation has been submitted

How to check

Through the admission online system (<http://apply.ust.ac.kr>)

I. Application Procedure

2. List of Required Documents



- ※ Additional documents may be required to confirm status of Foreigners, Koreans Living Overseas
- ※ If all required documents would not be submitted, then will be considered to fail at the formal examination in the first selection(Document screening)
- ※ Applicants for the integrative program should submit the same documents as applicants for the master program
- ※ **All application documents should be written in Korean or English.** Documents not written in English or Korean must be accompanied by certified translations (or documents notarized at embassy)

I . Application Procedure

3. Official English Score

Minimum Score Standard

Type	TOEFL			TOEIC	TEPS	IELTS
	iBT	CBT	PBT			
Score	79	213	550	730	657	6

※ The TOEIC score is the sum of the Listening & Reading score

※ The test date should be issued within 2 years of the date of application
(Oct.13, 2013 ~ Oct.12, 2015)

Excep-
-tion

Waiver from submission of official English Score

- Applicants who obtained a bachelor's degree or higher with more than 1 year of study in the English speaking countries, such as the U. S., U.K, Canada, Australia, New Zealand, Ireland, or the Republic South Africa



- UST(Expected) graduate

Authenticity of Official English Score

: UST check the authenticity of official English score through the corresponding testing organizations. (If any falsified official English score is found, the corresponding application is considered invalid, the admission is cancelled or the applicant is not allowed to apply for the university for the next five years.)



Deferred submission of official English scores for the admission application

-The permit conditions

: You are not required to provide an official English score if you have obtained degree at a university (graduate school) in the UST-designated English speaking countries (a total of 31 countries) and have proven that all the courses you have completed were taught in English.

-The UST designated countries

: Ghana, Guyana, Republic of Gambia, Nigeria, Liberia, Lesotho, Rwanda, Malawi, Republic of the Union of Myanmar, Vanuatu, Belize, Bhutan, Solomon is, Sudan, Sri Lanka, Swaziland, Sierra Leone, Eritrea, Ethiopia, Uganda, Zambia, Zimbabwe, Cameroon, Cambodia, Kenya, Kiribati, Tanzania, Tonga, Papua New Guinea, Fiji, Philippines

-The way to be deferred

: You are required to submit a 'Certificate of English as Medium Instruction' [Click](#) stating that English was the language of teaching on your course instead of an official English score. (Please use UST's prescribed form.)

-The period of grace

: You are eligible to postpone submission of an official English score meeting the minimum requirement until the period for the submission of degree thesis provided in Article 16 of the Regulations on Degree Conferment.

Excep-
-tion

4. Procedures of the First Selection and the Second Selection

First Selection (Document screening)

1 · Check the contents of the admission application (Including submission all required documents, satisfaction of minimum required official English score, etc.)

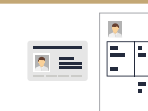
· Applicant's competence will be evaluated based on the documents that applicants submit including transcripts of undergraduate and graduate programs, and study proposals



· Announcement of Successful Applicants of the 1st selection (Document screening) and the schedule of the second selection (In-depth Interview)
: Nov.5(Thu), 17:00, 2015
· Method : Check the admission online system [Click](#)

Second Selection (In-depth Interview)

2 · Evaluation by in-depth interview in each field of study: Overall screening will be conducted in terms of the applicants' capability of completing the degree program, enthusiasm for study and research, potential of scientific experiments and academic communications



· Date : Nov.16(Mon) ~ Nov.19(Thu), 2015[Expected]
· Applicants are required to bring their ID card & the test identification slip for the interview

Announcement of Final Successful Applicants

3 · Date : Dec.10(Thu) 17:00, 2015
· Method : Check the admission online system [Click](#)



Admission Registration for Final Successful Applicants

4 · Date : Dec. 11(Fri) ~ Dec. 30(Wed) 18:00, 2015

· Enrollment Information Announcement UST Homepage

· Submission of admission registration document
· Registration Fee : KRW 180,000 (Payment in February)

⚠ Admission will be canceled for anyone who fails to register during the designated period

II . Important Notes

Eligibility and Application Schedule

Application Procedure and Instructions

List of Campus and Major

Scholarship and Benefits

1. Completion of an Application form

Fill out an accurate e-mail address during online application, as important announcements will be made via e-mail. UST will not take responsibility for disadvantages that may occur from inaccurate information



All applicants need to be aware that by submitting your applications, you are agreeing to that the personal information you provided will be processed in accordance with the relevant university rules. Collected personal information will be used to create the school register of the successful applicants.



2. The Submission of Required Documents

Disadvantage that arises when the contents of the Submitted documents(uploaded files) cannot be confirmed is the responsibility of the applicant.



All application documents should be written in Korean or English.

Documents not written in English or Korean must be accompanied by certified translations (or documents notarized at embassy)



Falsified or forged documents are found, this will lead to admission application rejection for the following five years and a failure an admission



Student who deferred submission of official English scores for admission application
- should submit one of the official English score described article 16 in the UST policy for degree conferral within the designated period for degree conferral



3. Selection

Even if the number of applicants fails to meet the enrollment goal, no offers will be made if all applicants are deemed unqualified.



4. UST Education



UST makes it a rule to study as a full-time student (from 9 A.M. to 6 P.M., Monday through Friday)

5. Submission list of additional documents for final successful applicants

Successful applicants are required to submit the original copies of the following documents to register officially.(applicants must attached the Apostille certificate or a Consular confirmations.)

- All applicants common
- Certificate of (expected) bachelor's degree
 - Transcript of bachelor's program
 - Certificate of (expected) master's degree(doctoral applicants only)
 - Transcript of master's program(doctoral applicants only)
- Koreans Living overseas
- Graduation certificate of elementary, junior high, high school
 - Certificate of Entry / Exit

Successful applicants are required to submit the copies of the following documents to register officially.

- Foreigners
- A copy of applicant's passport(only passport)
 - Copies of both parents' passports or ID card(If they are unavailable, you can replace it with other official documents indicating parents' nationality)
 - Applicants' birth certificate or family register proving the parent-child relationship (Official document indicating parent-child relationship between the applicant and parents)
 - ※ 'Copies of both parents' passports or ID card' can be replaced to applicants' birth certificate or family register which proves parents' nationality.

Students expecting graduation must submit proof of graduation and academic transcripts(including date of degree conferral or degree registration number) by the deadline below. The offer of admission may be withdrawn otherwise.
- Submission Period : by Mar.10(Thu), 2016



Additional Documents for Submission by final successful applicants in accordance with the 'Apostille Convention', for those applicants who graduated from universities out of Korea

- Document to be issued with an 'Apostille certificate' on : Certificate of degree for Bachelor's (and Master's for doctoral program applicants), Academic transcript for Bachelor's(and Master's for doctoral program applicants)
- Submission Period : by Mar.10(Thu), 2016
- Place of Issue : Authorities designated by your government

Apostille Convention?

An international treaty that facilitates mutual certification of official documents between state parties by recognizing legalization in the country of issue without complex authentication procedures

※ Applicants who've graduated from UST and had submitted Apostille Certificate before do not need to submit the same ones

※ Refer to [www.hcch.net] for information on authorities per country

※ All documents submitted should be written in Korean or English. For languages other than Korean or English, Please submit along with notarized translations(a Consular Confirmations) of the original documents

※ The apostille certificate can be replaced with and 'a Consular Confirmations'. (If the country is not a member of 'Apostille convention', etc.)

- Place of Issue
 - Korean embassy or consulate in your country
 - Embassy or consulate of your country in Korea

Successful applicants(who applied for Koreans Living overseas) are required to submit the original copies of the Graduation certificate of elementary, junior high and high school. (applicants must attach the Apostille certificate or a Consular confirmations.) until Mar.10(Thu), 2016

List of Campus and Major

Eligibility and Application Schedule

Application Procedure and Instructions

List of Campus and Major

Scholarship and Benefits

Click Press the button to go to the corresponding.

Foreigners/Korean Living overseas

Click : Searching for the detail information of Campus & Major

Campus	Major
<div>Click</div> <div>NFRI</div> <div>National Fusion Research Institute</div>	<div>Click</div> <div>Accelerator and nuclear fusion physical engineering</div>
<div>Click</div> <div></div> <div>Agency for Defense Development</div>	<div>Click</div> <div>Weapon Systems Engineering</div>
<div>Click</div> <div>KOPRI</div> <div>Korea Polar Research Institute</div>	<div>Click</div> <div>Polar Science</div>
<div>Click</div> <div>ibs</div> <div>Institute for Basic Science</div>	<div>Click</div> <div>Accelerator and nuclear fusion physical engineering</div>
	<div>Click</div> <div>Science and Technology Management Policy</div>
	<div>Click</div> <div>Basic Science</div>
	<div>Click</div> <div>Nano Science</div>
	<div>Click</div> <div>Nanobiotechnology and Bioinformatics</div>
	<div>Click</div> <div>Nanomaterials Science and Engineering</div>
	<div>Click</div> <div>Bio-Analytical Science</div>
	<div>Click</div> <div>Biomolecular Science</div>
	<div>Click</div> <div>Neuroscience</div>
	<div>Click</div> <div>Green Chemistry and Environmental Biotechnology</div>
<div>Click</div> <div>UST</div> <div>University of Science and Technology(UST)</div>	<div>Click</div> <div>Science and Technology Management Policy</div>
<div>Click</div> <div>KRISO</div> <div>Korea Research Institute of Ships & Ocean Engineering</div>	<div>Click</div> <div>Ship and Ocean Engineering</div>

Campus	Major
<div>Click</div> <div>KIT</div> <div>Korea Institute of Toxicology</div>	<div>Click</div> <div>Human and Environmental Toxicology</div>
<div>Click</div> <div>KIMS</div> <div>Korea Institute of Materials Science</div>	<div>Click</div> <div>Advanced Materials Engineering</div>
<div>Click</div> <div>KICT</div> <div>Korea Institute of Civil Engineering and Building Technology</div>	<div>Click</div> <div>Construction Environment Engineering</div>
	<div>Click</div> <div>Transportation and Logistics System & ITS Engineering</div>
	<div>Click</div> <div>Geotechnical & Geo-Space Engineering</div>
<div>Click</div> <div>KIST</div> <div>Korea Institute of Science & Technology</div>	<div>Click</div> <div>HCI & Robotics</div>
	<div>Click</div> <div>Accelerator and nuclear fusion physical engineering</div>
	<div>Click</div> <div>Science and Technology Management Policy</div>
	<div>Click</div> <div>Nanomaterials Science and Engineering</div>
	<div>Click</div> <div>Biological Chemistry</div>
	<div>Click</div> <div>Neuroscience</div>
	<div>Click</div> <div>Energy and Environmental Engineering</div>
	<div>Click</div> <div>Biomedical Engineering</div>
	<div>Click</div> <div>Human and Environmental Toxicology</div>
	<div>Click</div> <div>Green Process and System Engineering</div>
	<div>Click</div> <div>Clean Energy and Chemical Engineering</div>
	<div>Click</div> <div>Science and Technology Management Policy</div>
<div>Click</div> <div>KiSTi</div> <div>Korea Institute of Science & Technology Information</div>	<div>Click</div> <div>S&T Information Science</div>
	<div>Click</div> <div>Big Data Science</div>

List of Campus and Major

Eligibility and Application Schedule

Application Procedure and Instructions

List of Campus and Major

Scholarship and Benefits

Click Press the button to go to the corresponding.

Foreigners/Korean Living overseas

Click : Searching for the detail information of Campus & Major

Campus	Major
<div>Click</div> <div>KIMM</div> <div>Korea Institute of Machinery & Materials</div>	<div>Click</div> Nano-Mechatronics
	<div>Click</div> Nanobiotechnology and Bioinformatics
	<div>Click</div> Ship and Ocean Engineering
	<div>Click</div> Plant System and Machinery
	<div>Click</div> Environment & Energy Mechanical Engineering
<div>Click</div> <div>KBSI</div> <div>Korea Basic Science Institute</div>	<div>Click</div> Functional Genomics
	<div>Click</div> Nano Science
	<div>Click</div> Nano-Mechatronics
	<div>Click</div> Nanobiotechnology and Bioinformatics
	<div>Click</div> Bio-Analytical Science
	<div>Click</div> Green Chemistry and Environmental Biotechnology
	<div>Click</div> Marine Biotechnology
	<div>Click</div> Chemical Convergence Materials
<div>Click</div> <div>KB</div> <div>Korea Research Institute of Bioscience & Biotechnology</div>	<div>Click</div> Functional Genomics
	<div>Click</div> Nanobiotechnology and Bioinformatics
	<div>Click</div> Bioprocess Engineering
	<div>Click</div> Bio-Analytical Science
	<div>Click</div> Biomolecular Science
	<div>Click</div> Biosystems & Bioengineering
	<div>Click</div> Human and Environmental Toxicology
	<div>Click</div> Green Chemistry and Environmental Biotechnology
<div>Click</div> <div></div> <div>Korea Institute of Industrial Technology</div>	<div>Click</div> Nanobiotechnology and Bioinformatics
	<div>Click</div> Robotics and Virtual Engineering
	<div>Click</div> Advanced Energy and Technology
	<div>Click</div> Green Process and System Engineering
	<div>Click</div> Critical Materials and Semiconductor Packaging Engineering

Campus	Major
<div>Click</div> <div>kfri</div> <div>Korea Food Research Institute</div>	<div>Click</div> Science and Technology Management Policy
	<div>Click</div> Food Biotechnology
<div>Click</div> <div>KIER</div> <div>Korea Institute of Energy Research</div>	<div>Click</div> Advanced Energy and Technology
	<div>Click</div> Renewable Energy Engineering
<div>Click</div> <div>KAER</div> <div>Korea Atomic Energy Research Institute</div>	<div>Click</div> Accelerator and nuclear fusion physical engineering
	<div>Click</div> Radiation Biotechnology and Applied Radioisotope Science
	<div>Click</div> Radiochemistry & Nuclear Nonproliferation
	<div>Click</div> Advanced Nuclear System Engineering
	<div>Click</div> Quantum Energy Chemical Engineering
<div>Click</div> <div>KIRAMS</div> <div>Korea Institute of Radiological & Medical Sciences</div>	<div>Click</div> Rodiological & Medico-Oncological Sciences
<div>Click</div> <div></div> <div>Korea Electrotechnology Research Institute</div>	<div>Click</div> Energy and Power Conversion Engineering
	<div>Click</div> Electrical Functionality Material Engineering

List of Campus and Major

Eligibility and Application Schedule

Application Procedure and Instructions

List of Campus and Major

Scholarship and Benefits

Click Press the button to go to the corresponding.

Foreigners/Korean Living overseas

Click : Searching for the detail information of Campus & Major

Campus	Major
<div>Click</div> <div>ETRI</div> <div>Electronics and Telecommunications Research Institute</div>	<div>Click</div> Science and Technology Management Policy
	<div>Click</div> Nanobiotechnology and Bioinformatics
	<div>Click</div> Mobile communication & Digital Broadcasting Engineering
	<div>Click</div> Information Security Engineering
	<div>Click</div> Information and Communication Network Technology
	<div>Click</div> Advanced Device Technology
	<div>Click</div> Computer Software
<div>Click</div> <div>KIGAM</div> <div>Korea Institute of Geoscience & Mineral Resources</div>	<div>Click</div> Accelerator and nuclear fusion physical engineering
	<div>Click</div> Mineral & Groundwater Resources
	<div>Click</div> Nanomaterials Science and Engineering
	<div>Click</div> Geophysical Exploration
	<div>Click</div> Radiochemistry & Nuclear Nonproliferation
	<div>Click</div> Petroleum Resources Technology
	<div>Click</div> Resources Recycling
<div>Click</div> <div>KASI</div> <div>Korea Astronomy & Space Science Institute</div>	<div>Click</div> Science and Technology Management Policy
	<div>Click</div> Astronomy and Space Science
<div>Click</div> <div>KRI</div> <div>Korea Railroad Research Institute</div>	<div>Click</div> Transportation and Logistics System & ITS Engineering
	<div>Click</div> Robotics and Virtual Engineering
	<div>Click</div> Railway System Engineering
<div>Click</div> <div>Institut Pasteur</div> <div>Institut Pasteur Korea</div>	<div>Click</div> Biological Chemistry

Campus	Major
<div>Click</div> <div>KRISS</div> <div>Korea Research Institute of Standards and Science</div>	<div>Click</div> Nano Science
	<div>Click</div> Nanomaterials Science and Engineering
	<div>Click</div> Weapon Systems Engineering
	<div>Click</div> Bio-Analytical Science
	<div>Click</div> Medical Physics
	<div>Click</div> Advanced Device Technology
	<div>Click</div> Science of Measurement
	<div>Click</div> Aerospace System Engineering
<div>Click</div> <div>KIOM</div> <div>Korea Institute of Oriental Medicine</div>	<div>Click</div> Big Data Science
	<div>Click</div> Korean Medicine Life Science
<div>Click</div> <div>KARI</div> <div>Korea Aerospace Research Institute</div>	<div>Click</div> Aerospace System Engineering
<div>Click</div> <div>KIOST</div> <div>Korea Institute Of Ocean Science & Technology</div>	<div>Click</div> Marine Environmental Science
	<div>Click</div> Marine Biotechnology
	<div>Click</div> Marine Biology
	<div>Click</div> Integrated Ocean Sciences
<div>Click</div> <div>KRICT</div> <div>Korea Research Institute of Chemical Technology</div>	<div>Click</div> Science and Technology Management Policy
	<div>Click</div> Medicinal Chemistry and Pharmacology
	<div>Click</div> Green Chemistry and Environmental Biotechnology
	<div>Click</div> Chemical Convergence Materials

Highest standards of scholarship benefits

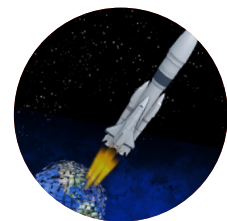
- Supported by monthly stipend



Doctoral Program	Master Program
Minimum of KRW 1,600,000 per month	Minimum of KRW 1,200,000 per month

- ※ UST students are supported by monthly stipend as a research scholar participating in the research at the government-funded research institutes
- ※ Additional allowance may be provided depending on campus budget
- Other scholarship and welfare benefits
- A dormitory room is provided for each student.
(availability limited in some campuses)

Participation in national projects involving world-class research facilities



Classification	Contents
Major research facilities	<ul style="list-style-type: none"> · RV Araon, King Sejong Station(KOPRI) · Naro (KSLV-1), Naro Space Center(KARI) · SMART nuclear reactor, Hanaro nuclear reactor(KAERI) · KSTAR, ITER international joint development project(NFRI) · National Primate Research Center, Korean Bioinformation Center(KRIBB) · International joint development of 25m Giant Magellan Telescope(KASI) · Possession of world-class equipment including the super computing center(KISTI)

Other Benefits for Outstanding Students



- Overseas Training Program
 - UST supports outstanding students who attend the internship or co-work in renowned overseas university or research institutes
- Overseas Exchange Program
 - Overseas Academic Exchange : UST supports outstanding students who present their papers in international conference
 - Overseas Trend Survey: UST assists outstanding students to visit and experience advanced education system in renowned overseas university or research institutes
- UST Research Paper Award
 - Outstanding research achievements for the journal, conference, patents, the others



Student Welfare

- All students are provided welfare as below
 - General insurance covering medical expenses, etc
 - The regular health check-up
 - Online or face-to-face counseling
 - e-Library : Rental service for the e-book, Web DB, etc
 - Tablet(i-Pad) rental service



Advanced Education System

- New major can be adjusted each semester
 - a timely and flexible response to rapid changes in the field of science and technology through the adjustment of majors
- Application fee and thesis examination fee are abolished to provide equal opportunity for more educational consumers
- Introducing instruction real-name system
 - Instructor's name and campus will be provided on transcripts to encourage their recognition of teaching responsibility



Agreement for Academic Exchange with Prestigious Universities in Korea (36 universities in total)

- Kangwon National University Graduate School, Konkuk University Graduate School, Korea University Graduate School, Korea University Green School, Gwangju Institute of Science and Technology, Sogang University Graduate School, Ajou University Graduate School, Yonsei University Graduate School, Changwon National University Graduate School, Chungnam National University Graduate School, Korea Advanced Institute of Science and Technology, Hanyang University Graduate School, Korea Aerospace University Graduate School, University of Seoul Graduate School, Seoul National University, Chungbuk National University, Korea Maritime University, Pusan National University, Yeungnam University, Chonbuk National University, Dong-A University, Jeju National University, Chonnam National University, Kyungpook National University, DGIST, UNIST, Hannam University, Incheon National University, Seoul National University of Science and Technology, Ewha womans University, Inje University, Hanbat National University, Konyang University, Keimyung University, Hallym University, Kwangwoon University